



2017 Quarantined Trials Report

Queensland



****WARNING****

Important Information for Quarantined (Unreleased but not abandoned) Trials

To ensure NVT trial results remain robust, relevant and of the highest quality, it is policy to exclude quarantined trial data from the published reports. Trials can be quarantined due to: frost, high CV values, crop damage (spray, animal, or herbicide), waterlogging etc. These events are random, uncontrollable, unpredictable and extremely variable in both timing and severity of the damage caused.

Data presented within this report has been made available to provide growers with a transparent account of the fate of unreleased but not abandoned NVT trials. The data is of no value for the purposes of head to head variety comparison and will not form part of the trial data for the NVT website, database and app reporting systems. It should not be used for any variety selection decisions and it has been excluded from the NVT Long Term MET analysis.

Replication of this data is strictly prohibited and it **MUST NOT** be used by ANY parties for producing variety brochures and marketing material, sowing guides, grower notes or ANY OTHER publication or communication activities.

Table of Contents

Important Information for Quarantined (Unreleased but not abandoned) Trials	2
Introduction	4
Table 1: 2017 QLD Unreleased Trials for Wheat.....	5
Wheat QLD - Grain Quality	
Trial Yield Data	6
1000 Grain Weight	8
Hectolitre Weight	9
Protein	11
Screenings (<2.2 mm sieve).....	13
Individual Trial Reports QLD	
Wheat Trials QLD	
MacAlister - Wheat - Early Season, 2017	15
Nindigully - Wheat - Early Season, 2017.....	19
Springsure - Wheat - Main Season, 2017	23

Introduction

The quarantine reports are state based and have three major data sections:

- Table list of 2017 unreleased trials for Wheat Barley and Canola (per Crop basis)
- Grain Quality data (as available) for all trials
Subdivided into Trial Yield Data, 1000 Grain Weight, Hectolitre Weight, Protein, Screenings, Oil, Protein Seed etc.
- Individual Trial reports for all unreleased trials

This is the Queensland (QLD) 2017 Quarantine trials report for Barley, Canola and Wheat.

Table 1: 2017 QLD Unreleased Trials for Barley, Canola and Wheat

State	Site Description	Crop Name	Trial Code	Sowing Date	Harvest Date	Site Mean Yield	CV Value
QLD	Macalister	Wheat	WEaA17MCAL4	15-Jun-17	01-Dec-17	2.09	18.46
QLD	Nindigully	Wheat	WEaA17NIND4	06-May-17	29-Oct-17	1.08	15.27
QLD	Springsure	Wheat	WMaA17SPRS4	03-May-17	02-Nov-17	1.57	15.35

Trial Yield Data

State Region Nearest Town Crop Type Trial ID Variety Name	QLD SEQ Macalister Wheat WEaA17MCAL4 t/ha	%	QLD SWQ Nindigully Wheat WEaA17NIND4 t/ha	%
Baxter	1.67	79	0.55	51
Coolah	2.44	117	1.23	115
DS Faraday	2.44	116	1.05	97
EGA Gregory	2.4	115	1.29	120
LRPB Flanker	2.22	106	1.45	134
LRPB Gauntlet	1.6	76	0.92	85
LRPB Lancer	2.11	101	1.09	101
Mitch	3.07	147	0.93	86
RGT Zanzibar	1.96	93	-	-
Strzelecki	2.04	97	1.04	97
Sunlamb	1.81	87	0.85	78
Sunmax	2.09	100	1.14	106
Suntime	1.98	95	1.13	105
Suntop	2.05	98	1.13	105
Sunvale	1.98	94	1.05	97
Sunzell	1.84	88	1.06	98
Tungsten	1.79	85	-	-
Site Mean (t/ha)	2.09		1.08	
CV (%)	18.46		15.27	
Probability	0.0017		<0.001	
LSD (t/ha)	0.65	31	0.29	27
Analysis Date	08-Dec-2017		18-Nov-2017	
Sowing Date	15-Jun-2017		06-May-2017	
Trial Comments	This trial has a CV		This trial has a CV	

Trial Yield Data

State	QLD	
Region	CQ	
Nearest Town	Springsure	
Crop Type	Wheat	
Trial ID	WMaA17SPRS4	
Variety Name	t/ha	%
Beckom	1.19	76
Condo	1.71	109
Coolah	2.27	144
DS Faraday	1.86	118
EGA Gregory	2.03	129
Elmore CL Plus	1.28	82
Hartog	2.05	130
Lang	1.33	85
Livingston	1.24	79
LRPB Crusader	1.58	100
LRPB Dart	0.91	58
LRPB Flanker	1.57	100
LRPB Gauntlet	1.04	66
LRPB Impala	1.2	77
LRPB Mustang	0.87	55
LRPB Reliant	1.64	105
LRPB Spitfire	1.76	112
Mitch	2.22	141
Suntop	2.02	128
Tenfour	1.59	101
Tungsten	1.85	118
Site Mean (t/ha)	1.57	
CV (%)	15.35	
Probability	<0.001	
LSD (t/ha)	0.4	25
Analysis Date	18-Nov-2017	
Sowing Date	03-May-2017	
Trial Comments		

National
Variety
Trials
A GRDC INITIATIVE



1000 Grain Weight

State	QLD	QLD
Region	SEQ	SWQ
Nearest Town	Macalister	Nindigully
Crop Type	Wheat	Wheat
Trial ID	WEaA17MCAL4	WEaA17NIND4
Variety Name	g/1000 seeds	g/1000 seeds
Baxter	-	32.6
Coolah	-	29.88
DS Faraday	-	32.62
EGA Gregory	-	33.77
LRPB Flanker	-	34.21
LRPB Gauntlet	-	32.04
LRPB Lancer	-	33.7
Mitch	-	30.28
RGT Zanzibar	-	-
Strzelecki	-	31.22
Sunlamb	-	25.73
Sunmax	-	31.79
Suntime	-	33.49
Suntop	-	33.79
Sunvale	-	32.48
Sunzell	-	31.77
Tungsten	-	-

National
Variety
Trials
A GRDC INITIATIVE



Hectolitre Weight

State	QLD	QLD
Region	SEQ	SWQ
Nearest Town	Macalister	Nindigully
Crop Type	Wheat	Wheat
Trial ID	WEaA17MCAL4	WEaA17NIND4
Variety Name	kg/hectolitre	kg/hectolitre
Baxter	-	73.5
Coolah	-	77.2
DS Faraday	-	74.3
EGA Gregory	-	78.1
LRPB Flanker	-	80.1
LRPB Gauntlet	-	78.4
LRPB Lancer	-	74.2
Mitch	-	71.5
RGT Zanzibar	-	-
Strzelecki	-	74.9
Sunlamb	-	74.5
Sunmax	-	75.1
Suntime	-	77.7
Suntop	-	75.2
Sunvale	-	78.3
Sunzell	-	71.9
Tungsten	-	-

National
Variety
Trials

A GRDC INITIATIVE



Hectolitre Weight

State	QLD
Region	CQ
Nearest Town	Springsure
Crop Type	Wheat
Trial ID	WMaA17SPRS4
Variety Name	kg/hectolitre
Beckom	68.9
Condo	70.7
Coolah	73.1
DS Faraday	73.7
EGA Gregory	73.4
Elmore CL Plus	71.5
Hartog	71.8
Lang	74.2
Livingston	70.6
LRPB Crusader	71
LRPB Dart	72.7
LRPB Flanker	71.8
LRPB Gauntlet	75
LRPB Impala	71.3
LRPB Mustang	70.7
LRPB Reliant	72.9
LRPB Spitfire	78.6
Mitch	68.2
Suntop	71.1
Tenfour	70.7
Tungsten	66.9

National
Variety
Trials

A GRDC INITIATIVE



Protein

State	QLD	QLD
Region	SEQ	SWQ
Nearest Town	Macalister	Nindigully
Crop Type	Wheat	Wheat
Trial ID	WEaA17MCAL4	WEaA17NIND4
Variety Name	%	%
Baxter	-	13.4
Coolah	-	11.8
DS Faraday	-	12.1
EGA Gregory	-	11.7
LRPB Flanker	-	11.2
LRPB Gauntlet	-	13.4
LRPB Lancer	-	11.9
Mitch	-	11.8
RGT Zanzibar	-	-
Strzelecki	-	11.7
Sunlamb	-	13.1
Sunmax	-	12.5
Suntime	-	12.9
Suntop	-	12.2
Sunvale	-	12.5
Sunzell	-	13.7
Tungsten	-	-



Protein

State	QLD
Region	CQ
Nearest Town	Springsure
Crop Type	Wheat
Trial ID	WMaA17SPRS4
Variety Name	%
Beckom	10.93
Condo	11.2
Coolah	10.64
DS Faraday	11.24
EGA Gregory	11.02
Elmore CL Plus	10.89
Hartog	11.74
Lang	11.48
Livingston	11.05
LRPB Crusader	11.24
LRPB Dart	11.48
LRPB Flanker	11.01
LRPB Gauntlet	11.52
LRPB Impala	11.14
LRPB Mustang	12.06
LRPB Reliant	10.63
LRPB Spitfire	13.54
Mitch	10.36
Suntop	10.75
Tenfour	11.17
Tungsten	10.83

National
Variety
Trials
A GRDC INITIATIVE



Screenings (<2.2 mm sieve)

State	QLD	QLD
Region	SEQ	SWQ
Nearest Town	Macalister	Nindigully
Crop Type	Wheat	Wheat
Trial ID	WEaA17MCAL4	WEaA17NIND4
Variety Name	%	%
Baxter	-	3.4
Coolah	-	3.5
DS Faraday	-	2.1
EGA Gregory	-	1.4
LRPB Flanker	-	1.4
LRPB Gauntlet	-	1.3
LRPB Lancer	-	0.9
Mitch	-	8.6
RGT Zanzibar	-	-
Strzelecki	-	1.9
Sunlamb	-	2.1
Sunmax	-	2.5
Suntime	-	1.3
Suntop	-	4.2
Sunvale	-	0.8
Sunzell	-	2.2
Tungsten	-	-

National
Variety
Trials

A GRDC INITIATIVE



Screenings (<2.2 mm sieve)

State	QLD
Region	CQ
Nearest Town	Springsure
Crop Type	Wheat
Trial ID	WMaA17SPRS4
Variety Name	%
Beckom	3.47
Condo	1.09
Coolah	1.54
DS Faraday	9.2
EGA Gregory	5.64
Elmore CL Plus	5.32
Hartog	2.54
Lang	4.9
Livingston	4.66
LRPB Crusader	4.7
LRPB Dart	9.19
LRPB Flanker	16.72
LRPB Gauntlet	3.83
LRPB Impala	6.94
LRPB Mustang	2.24
LRPB Reliant	2.96
LRPB Spitfire	1.94
Mitch	8.23
Suntop	2.87
Tenfour	8.9
Tungsten	6.27

National
Variety
Trials

A GRDC INITIATIVE



MacAlister - Wheat - Early Season, 2017

Mean Yield:	2.09 (tonnes/ha)	Sowing Date:	15/06/2017
LSD:	0.65 (tonnes/ha)	Harvest Date:	1/12/2017
CV:	18.5 %	Report Date:	15/01/2018
Probability:	0.0017	Trial Code:	WEaA17MCAL4
		Trial Owner:	NVT

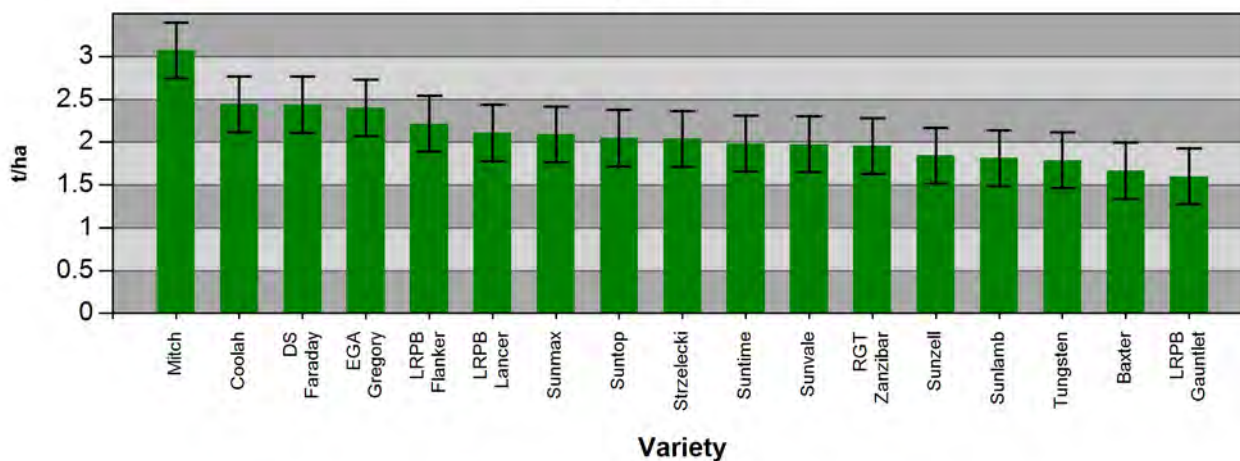
Trial General Comments

Date	Comments
13/12/2017	This trial has a CV greater than 15% indicating high variability across the trial. Trial is not to be released.

Weather Conditions

Event	Comments
Frost Event	
Heat Event	This trial experienced extreme heat conditions on the following dates throughout the flowering period: 34.2 °C on Sep 20, 33.6 °C on Sep 21, 33.7 °C on Sep 22, 36.1 °C on Sep 23, 37.8 °C on Sep 24, 36.4 °C on Sep 25, 32.6 °C on Sep 26, 36.4 °C on Sep 27, 38.8 °C on Sep 28, 36.4 °C on Sep 29, 34 °C on Oct 4, 35.2 °C on Oct 5, 36 °C on Oct 6, 34 °C on Oct 9, 39.5 °C on Oct 10, 35.3 °C on Oct 11, 35.1 °C on Oct 13, 33.7 °C on Oct 20, 33.8 °C on Oct 25, 34.6 °C on Oct 26, 36.6 °C on Oct 28, 36.8 °C on Oct 29, 37.4 °C on Oct 30. Interpret results with caution.

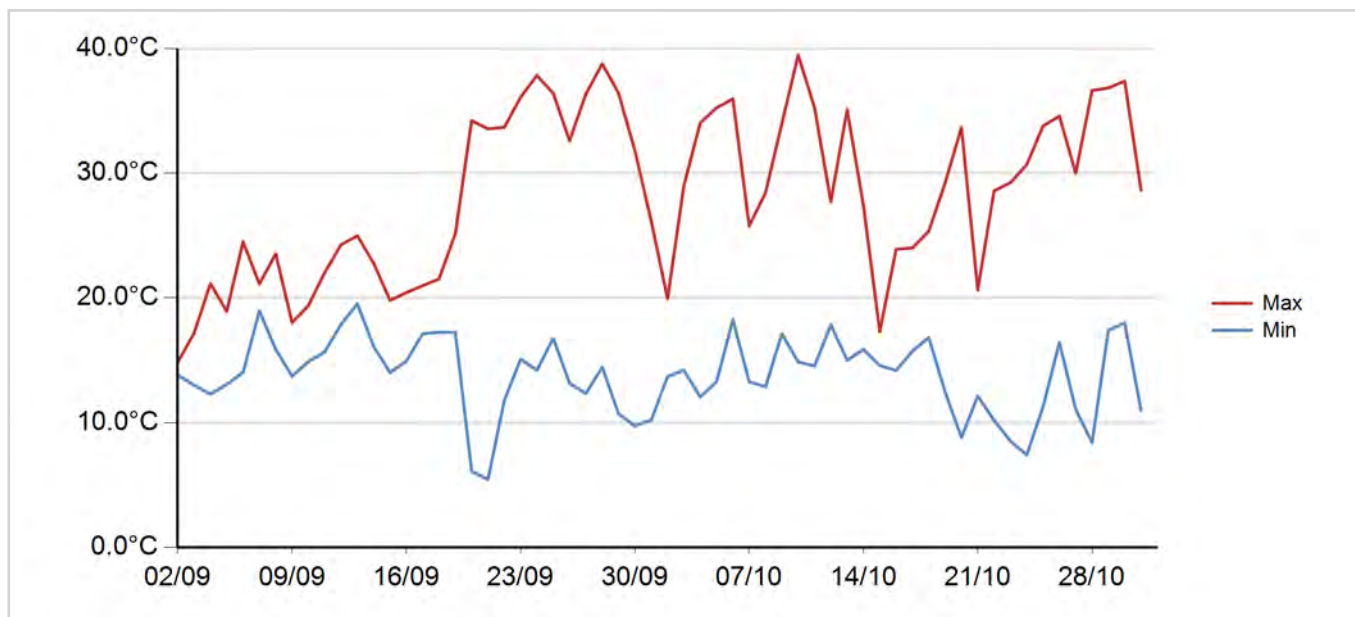
Variety Yields



Analysis and Reveal Standards

Analysis	
	8/12/2017
	Predicted Yield
	tonnes/ha
Mitch	3.07
Coolah	2.44
DS Faraday	2.44
EGA Gregory	2.40
LRPB Flanker	2.22
LRPB Lancer	2.11
Sunmax	2.09
Suntop	2.05
Strzelecki	2.04
Suntime	1.98
Sunvale	1.98
RGT Zanzibar	1.96
Sunzell	1.84
Sunlamb	1.81
Tungsten	1.79
Baxter	1.67
LRPB Gauntlet	1.60

Temperature Graph



Pre Harvest Measurements

Pre-Harvest Measurements			
	21/08/2017		29/03/2017
	Early Growth Score	Establishment	Number of Rows per Plot
	1 Extremely Poor - 9 Excellent	0 = None, 9 = Maximum	number
Baxter	8.0	6.7	5.0
Coolah	7.7	7.0	5.0
DS Faraday	7.7	6.7	5.0
EGA Gregory	7.7	6.3	5.0
LRPB Flanker	7.3	6.7	5.0
LRPB Gauntlet	7.3	5.7	5.0
LRPB Lancer	7.0	6.3	5.0
Mitch	8.0	7.0	5.0
RGT Zanzibar	6.0	6.7	5.0
Strzelecki	7.7	7.0	5.0
Sunlamb	7.7	7.3	5.0
Sunmax	7.3	6.3	5.0
Suntime	8.7	7.7	5.0
Suntop	8.3	7.0	5.0
Sunvale	7.3	6.3	5.0
Sunzell	8.0	7.0	5.0
Tungsten	8.0	7.0	5.0

Chemicals

Ingredients	Date	Rate	Units
MCPA 750 g/L	21/08/2017	1.00	L/ha
Halauxifen 200 g/kg, Florasulam 200 g/kg	21/08/2017	25.00	g/ha

Fertilisers

Product	Date	Rate kg/ha	N kg/ha	P kg/ha	S kg/ha
Granulock Supreme Z	15/06/2017	80	9.6	16.8	3.2

Soil Tests

Soil Classification Details	
Order	Vertosols Vertosols: clay soils with shrink–swell properties that exhibit strong cracking when dry. Some of these soils also show gilgai microrelief.
Sub-Order	Black
Identification Source	CSIRO SoilMapp

	Depth	Texture	Total Nitrogen	Phosphorous	P Test Type
	cm	1 sand, 2 sandy loam, 3 loam, 4 loamy clay, 5 clay	mg/kg	mg/kg	
10/05/2017	0-10	0.0	28.2	0.00	Colwell
10/05/2017	10-60	0.0	32.2	0.00	0.0

	Organic Carbon	pH (water)	pH (CaCl2)	Conductivity (EC)	ESP
	%	pH	pH	dS/m	%
10/05/2017	1.0	8.30	7.50	0.2	3.3
10/05/2017	0.0	0.00	0.00	0.0	na

Rainfall (mm) Rainfall Data Source: BOM Weather Station

Jan	Feb	Mar	Apr	May	Jun	Jul	Aug	Sep	Oct	Nov	Dec
234.4	31.4	176.4	0.6	2.6	15.6	38.2	2.8	0.8	130.0	11.6	0.0

Paddock History

Year	Crop	Herbicides	Fertilisers
2014	Corn	NK	NK
2015	Other	NK	NK
2016	Long fallow	NK	NK

Nindigully - Wheat - Early Season, 2017

Mean Yield:	1.08 (tonnes/ha)	Sowing Date:	6/05/2017
LSD:	0.29 (tonnes/ha)	Harvest Date:	29/10/2017
CV:	15.3 %	Report Date:	15/01/2018
Probability:	<0.001	Trial Code:	WEaA17NIND4
		Trial Owner:	NVT

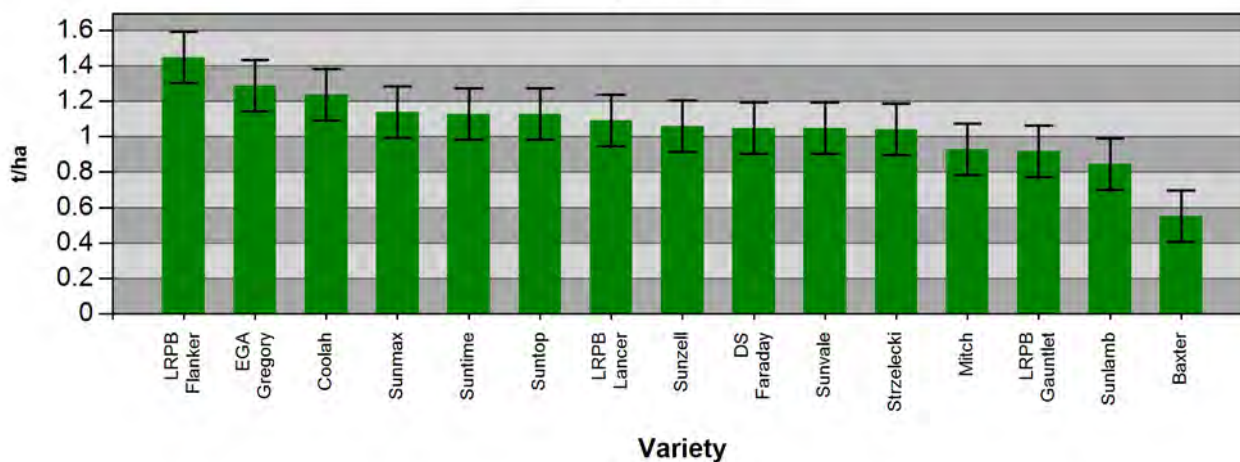
Trial General Comments

Date	Comments
30/11/2017	This trial has a CV greater than 15% indicating high variability across the trial. Trial is not to be released.

Weather Conditions

Event	Comments
Frost Event	This trial experienced frost conditions on the following dates throughout the flowering period: -0.9 °C on Aug 2, -1.1 °C on Aug 9, -0.7 °C on Aug 13, -2.4 °C on Aug 20, -0.4 °C on Aug 25, -3.2 °C on Aug 29, -1.6 °C on Aug 30, -0.3 °C on Aug 31, -2.1 °C on Sep 1. Interpret results with caution.
Heat Event	This trial experienced extreme heat conditions on the following dates throughout the flowering period: 33.1 °C on Aug 16, 33.2 °C on Sep 3, 33.8 °C on Sep 12, 36.1 °C on Sep 13, 32.1 °C on Sep 18, 33.8 °C on Sep 21, 36.3 °C on Sep 22, 40.3 °C on Sep 23, 39.8 °C on Sep 24, 36.5 °C on Sep 25, 35.8 °C on Sep 26, 41.3 °C on Sep 27, 36.9 °C on Sep 28, 33.5 °C on Sep 29, 33 °C on Oct 4, 35.4 °C on Oct 5, 34.4 °C on Oct 6, 34.8 °C on Oct 7, 34 °C on Oct 8, 33.6 °C on Oct 9, 36 °C on Oct 10, 38.6 °C on Oct 11, 32.3 °C on Oct 12, 33.7 °C on Oct 14, 33.8 °C on Oct 20, 32.9 °C on Oct 24, 35.7 °C on Oct 25, 37 °C on Oct 26, 35.4 °C on Oct 27, 35.5 °C on Oct 28, 38.7 °C on Oct 29, 33.6 °C on Oct 30, 34.5 °C on 2, 34.2 °C on 3, 36.8 °C on 4, 33.1 °C on 7, 32.5 °C on 8, 34.2 °C on 2. Interpret results with caution.

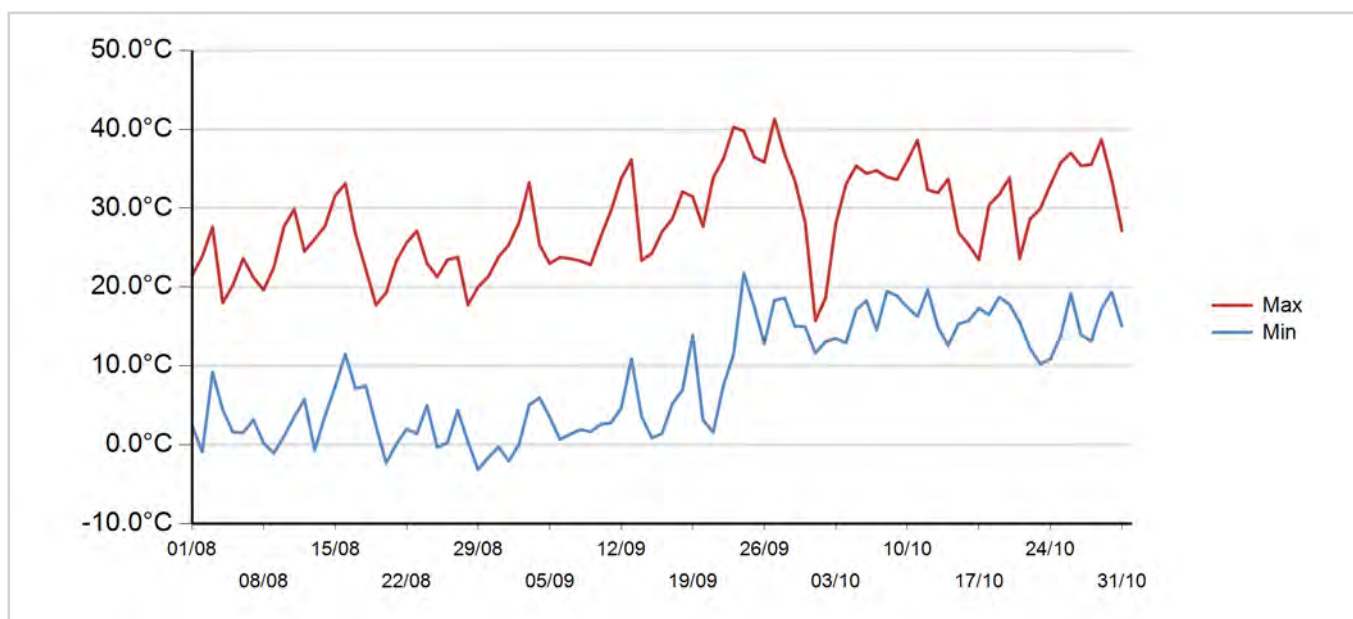
Variety Yields



Analysis and Receival Standards

	Analysis		Receival Standards		
	18/11/2017	29/10/2017			
	Predicted Yield	Hectolitre Weight	Protein	Screenings (<2.0mm sieve)	1000 grain weight
	tonnes/ha	kg/hectolitre	%	%	g/1000 seeds
LRPB Flanker	1.45	80.10	11.20	1.40	34.21
EGA Gregory	1.29	78.10	11.70	1.40	33.77
Coolah	1.23	77.20	11.80	3.50	29.88
Sunmax	1.14	75.10	12.50	2.50	31.79
Suntime	1.13	77.70	12.90	1.30	33.49
Suntop	1.13	75.20	12.20	4.20	33.79
LRPB Lancer	1.09	74.20	11.90	0.90	33.70
Sunzell	1.06	71.90	13.70	2.20	31.77
DS Faraday	1.05	74.30	12.10	2.10	32.62
Sunvale	1.05	78.30	12.50	0.80	32.48
Strzelecki	1.04	74.90	11.70	1.90	31.22
Mitch	0.93	71.50	11.80	8.60	30.28
LRPB Gauntlet	0.92	78.40	13.40	1.30	32.04
Sunlamb	0.85	74.50	13.10	2.10	25.73
Baxter	0.55	73.50	13.40	3.40	32.60

Temperature Graph



Pre Harvest Measurements

Pre-Harvest Measurements							
22/06/2017		29/03/2017	29/10/2017		15/09/2017		
Early Growth Score	Establishment	Number of Rows per Plot	Lodging score	Shattering score	Zadoks score	Frost damage - seed percent	
1 Extremely Poor - 9 Excellent	0 = None, 9 = Maximum	number	0 = No Lodging, 9 = Maximum Lodging	0 = None, 9 = Maximum	score	0% = None, 100% = Maximum	
Baxter	7.0	6.3	5.0	0.0	1.3	76.0	0.0
Coolah	8.0	8.0	5.0	0.0	0.3	75.0	8.3
DS Faraday	7.3	7.0	5.0	0.3	0.3	74.3	10.0
EGA Gregory	7.7	7.7	5.0	0.0	0.3	75.0	6.7
LRPB Flanker	7.3	7.3	5.0	0.3	0.7	76.0	5.0
LRPB Gauntlet	7.3	8.0	5.0	0.0	0.7	75.3	0.0
LRPB Lancer	7.7	7.7	5.0	0.0	0.0	75.0	3.3
Mitch	8.0	7.7	5.0	0.0	0.3	77.0	13.3
Strzelecki	8.0	8.0	5.0	0.0	0.7	76.0	8.3
Sunlamb	8.0	7.7	5.0	0.0	0.0	75.0	0.0
Sunmax	7.3	7.3	5.0	0.0	0.3	75.0	0.0
Suntime	7.7	8.0	5.0	0.0	0.3	76.0	0.0
Suntop	7.7	7.7	5.0	0.0	0.7	77.0	1.7
Sunvale	7.7	7.7	5.0	0.0	0.3	76.0	0.0
Sunzell	7.0	7.7	5.0	0.0	0.7	75.0	0.0

Fertilisers

Product	Date	Rate kg/ha	N kg/ha	P kg/ha	S kg/ha
Granulock Supreme Z	6/05/2017	50	6	10.5	2

Soil Tests

Soil Classification Details	
Order	Vertosols Vertosols: clay soils with shrink–swell properties that exhibit strong cracking when dry. Some of these soils also show gilgai microrelief.
Sub-Order	Grey
Identification Source	CSIRO SoilMapp

	Depth	Texture	Total Nitrogen	Phosphorous	P Test Type
	cm	1 sand, 2 sandy loam, 3 loam, 4 loamy clay, 5 clay	mg/kg	mg/kg	
21/06/2017	0-10	5.0	6.0	10.00	Colwell
21/06/2017	10-60	5.0	7.1	0.00	0.0

	Organic Carbon	pH (water)	pH (CaCl2)	Conductivity (EC)	ESP
	%	pH	pH	dS/m	%
21/06/2017	0.5	8.22	7.50	0.1	1.3
21/06/2017	0.0	8.75	7.90	0.1	4.1

Rainfall (mm) Rainfall Data Source: BOM Weather Station

Jan	Feb	Mar	Apr	May	Jun	Jul	Aug	Sep	Oct	Nov	Dec
43.4	17.4	57.0	50.0	0.0	9.0	7.8	3.2	0.8	118.9	0.0	0.0

Paddock History

Year	Crop	Herbicides	Fertilisers
2015	Long fallow	NK	NK
2016	Chickpea	NK	NK

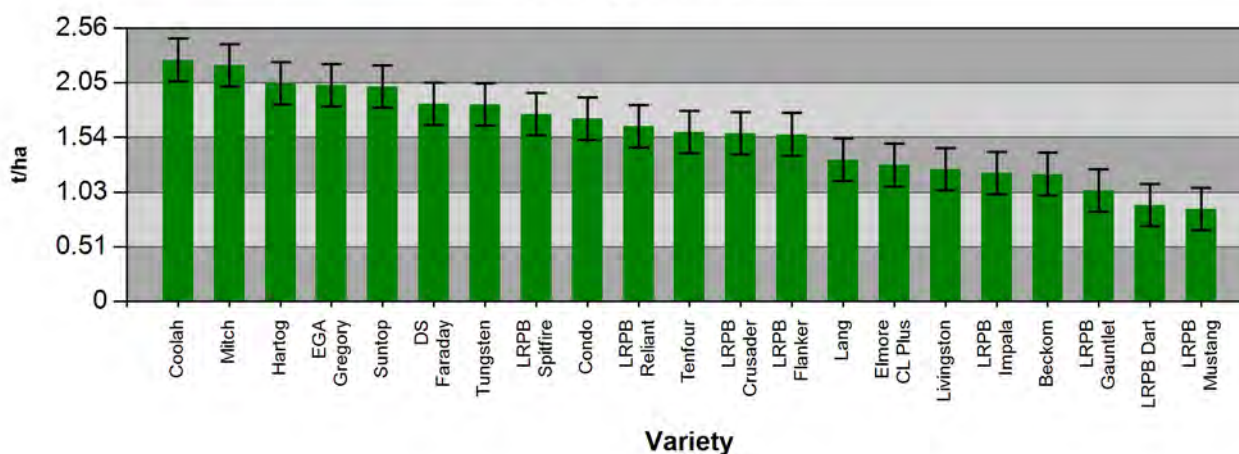
Springsure - Wheat - Main Season, 2017

Mean Yield:	1.57 (tonnes/ha)	Sowing Date:	3/05/2017
LSD:	0.40 (tonnes/ha)	Harvest Date:	2/11/2017
CV:	15.3 %	Report Date:	8/01/2018
Probability:	<0.001	Trial Code:	WMaA17SPRS4
		Trial Owner:	NVT

Weather Conditions

Event	Comments
Frost Event	This trial experienced frost conditions on the following dates throughout the flowering period: -0.2 °C on Aug 10, -0.5 °C on Aug 21. Interpret results with caution.
Heat Event	This trial experienced extreme heat conditions on the following dates throughout the flowering period: 32.3 °C on Aug 13, 32.9 °C on Aug 14, 33.6 °C on Aug 15, 32.8 °C on Aug 16, 35.1 °C on Aug 17, 34.3 °C on Aug 18, 32.2 °C on Aug 23, 32 °C on Sep 2, 32.2 °C on Sep 3, 34.6 °C on Sep 4, 33.1 °C on Sep 11, 34.3 °C on Sep 12, 34.4 °C on Sep 13, 32.5 °C on Sep 17, 33 °C on Sep 19, 36.1 °C on Sep 20, 36.1 °C on Sep 21, 36.2 °C on Sep 22, 37.4 °C on Sep 23, 38 °C on Sep 24, 37.6 °C on Sep 25, 38.5 °C on Sep 26, 38.4 °C on Sep 27, 41.9 °C on Sep 28, 40.8 °C on Sep 29, 38.7 °C on Sep 30, 35.4 °C on Oct 4, 34.9 °C on Oct 5, 35.7 °C on Oct 6, 35.5 °C on Oct 7, 34.9 °C on Oct 8, 36.8 °C on Oct 9, 38.9 °C on Oct 10, 36 °C on Oct 11, 37.3 °C on Oct 12, 32.2 °C on Oct 13, 32.2 °C on Oct 25, 35.4 °C on Oct 26, 35.1 °C on Oct 27, 37 °C on Oct 28, 35.5 °C on Oct 29, 35.4 °C on Oct 30. Interpret results with caution.

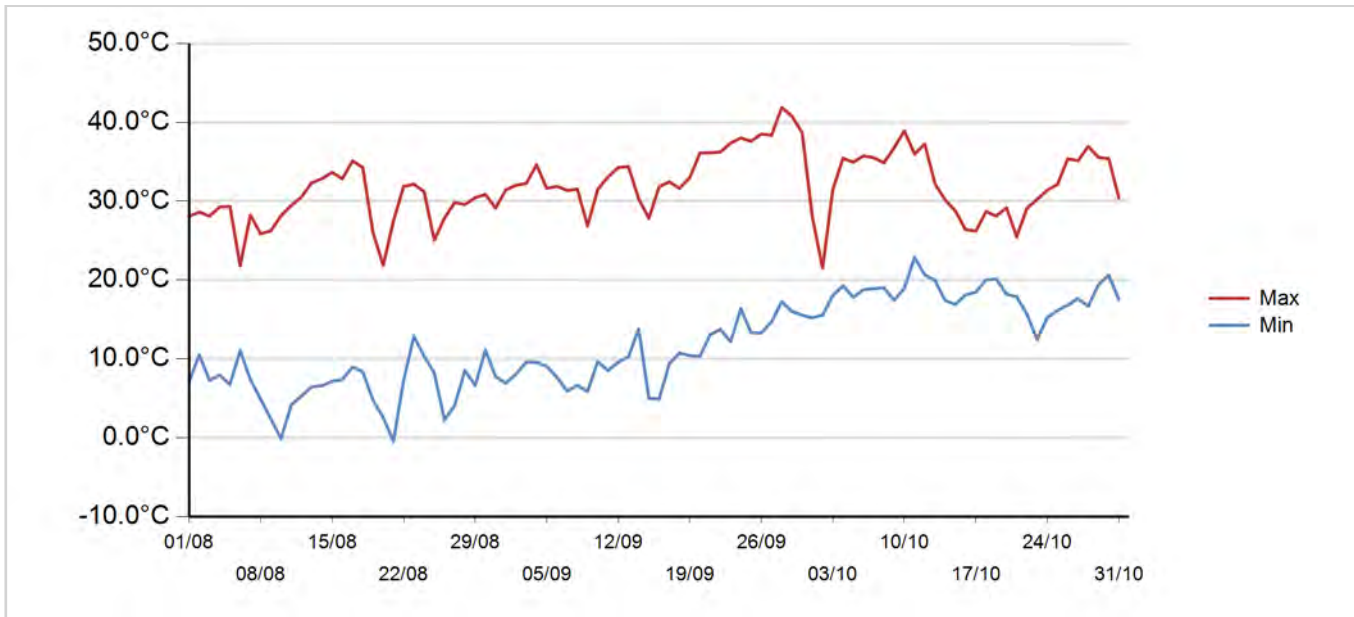
Variety Yields



Analysis and Receival Standards

	Analysis	Receival Standards		
	18/11/2017	2/11/2017		
	Predicted Yield	Hectolitre Weight	Protein	Screenings (<2.0mm sieve)
	tonnes/ha	kg/hectolitre	%	%
Coolah	2.27	73.10	10.60	1.54
Mitch	2.22	68.20	10.40	8.23
Hartog	2.05	71.80	11.70	2.54
EGA Gregory	2.03	73.40	11.00	5.64
Suntop	2.02	71.10	10.80	2.87
DS Faraday	1.86	73.70	11.20	9.20
Tungsten	1.85	66.90	10.80	6.27
LRPB Spitfire	1.76	78.60	13.50	1.94
Condo	1.71	70.70	11.20	1.09
LRPB Reliant	1.64	72.90	10.60	2.96
Tenfour	1.59	70.70	11.20	8.90
LRPB Crusader	1.58	71.00	11.20	4.70
LRPB Flanker	1.57	71.80	11.00	16.72
Lang	1.33	74.20	11.50	4.90
Elmore CL Plus	1.28	71.50	10.90	5.32
Livingston	1.24	70.60	11.10	4.66
LRPB Impala	1.20	71.30	11.10	6.94
Beckom	1.19	68.90	10.90	3.47
LRPB Gauntlet	1.04	75.00	11.50	3.83
LRPB Dart	0.91	72.70	11.50	9.19
LRPB Mustang	0.87	70.70	12.10	2.24

Temperature Graph



Pre Harvest Measurements

Pre-Harvest Measurements				
	4/04/2017	2/11/2017		7/06/2017
	Number of Rows per Plot	Lodging score	Shattering score	Establishment
	number	0 = No Lodging, 9 = Maximum Lodging	0 = None, 9 = Maximum	0 = None, 9 = Maximum
Beckom	4.0	6.3	0.7	5.3
Condo	4.0	1.7	0.3	6.0
Coolah	4.0	2.3	0.8	5.5
DS Faraday	4.0	4.5	1.0	4.3
EGA Gregory	4.0	5.7	1.0	4.3
Elmore CL Plus	4.0	4.0	1.7	5.3
Hartog	4.0	5.0	1.0	5.3
Lang	4.0	5.3	2.0	4.7
Livingston	4.0	2.3	0.3	4.7
LRPB Crusader	4.0	2.0	2.0	5.3
LRPB Dart	4.0	5.0	0.0	5.0
LRPB Flanker	4.0	8.0	1.0	3.7
LRPB Gauntlet	4.0	1.7	0.7	2.3
LRPB Impala	4.0	7.3	0.0	3.3
LRPB Mustang	4.0	4.3	1.7	4.0
LRPB Reliant	4.0	7.5	1.0	5.0
LRPB Spitfire	4.0	4.3	0.0	6.7
Mitch	4.0	1.3	0.3	5.7
Suntop	4.0	3.3	0.3	6.3
Tenfour	4.0	0.7	0.3	5.3
Tungsten	4.0	3.3	0.0	5.7

Chemicals

Ingredients	Date	Rate	Units
MCPA 420 g/L, Picloram 26 g/L	1/06/2017	1.00	L/ha

Fertilisers

Product	Date	Rate kg/ha	N kg/ha	P kg/ha	S kg/ha
Urea	3/05/2017	160	73.6	-	-
Granulock 10Z	3/05/2017	40	4.8	8.4	1.6

Soil Tests

Soil Classification Details	
Order	Vertosols Vertosols: clay soils with shrink–swell properties that exhibit strong cracking when dry. Some of these soils also show gilgai microrelief.
Sub-Order	Grey
Identification Source	Trial manager

	Depth	Texture	Total Nitrogen	Phosphorous	P Test Type
	cm	1 sand, 2 sandy loam, 3 loam, 4 loamy clay, 5 clay	mg/kg	mg/kg	
11/04/2017	0-10	4.0	5.0	6.00	Colwell
11/04/2017	10-60	4.0	7.0	3.00	Colwell

	Organic Carbon	pH (water)	pH (CaCl2)	Conductivity (EC)	ESP
	%	pH	pH	dS/m	%
11/04/2017	0.7	8.10	7.20	0.1	0.8
11/04/2017	0.7	8.20	7.20	0.1	2.3

Rainfall - (No Data Found)

Paddock History

Year	Crop	Herbicides	Fertilisers
2014	Chickpea	nil	Urea
2015	Long fallow	roundup	nil
2016	Chickpea	nil	nil